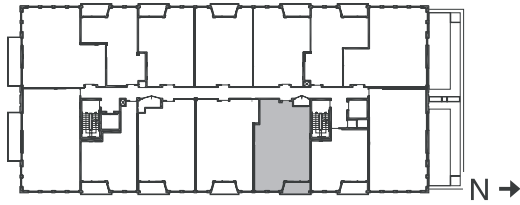
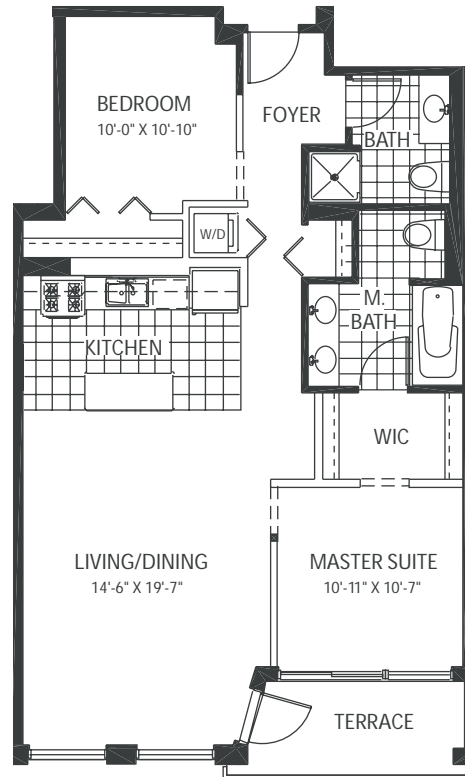


## 740 FULTON love where you live



**UNIT 9** 1050 sq. ft.  
plus 69 sq.ft. balcony  
2 Bedrooms / 2 Full Baths  
East view



**UNIT 9** 1050 sq.ft.

- Hardwood Flooring in main living areas
- Private outdoor terrace
- Dramatic 11' ceilings
- Exposed ductwork with painted concrete ceilings
- Floor-to-ceiling windows
- Gas fireplace with marble surround
- Granite kitchen countertops
- Designer appliances available in stainless steel, black or white
- Marble countertops in master bath
- Washer and dryer

\*740 Fulton, LLC strives to represent each home as accurately as possible. However, our policy of continued attention to design and construction requires that all specifications, equipment, finishes, prices and dimensions may be subject to change without notice.