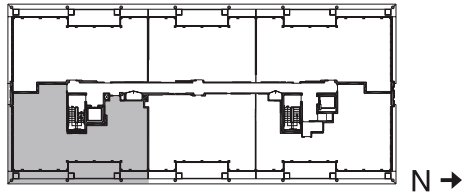
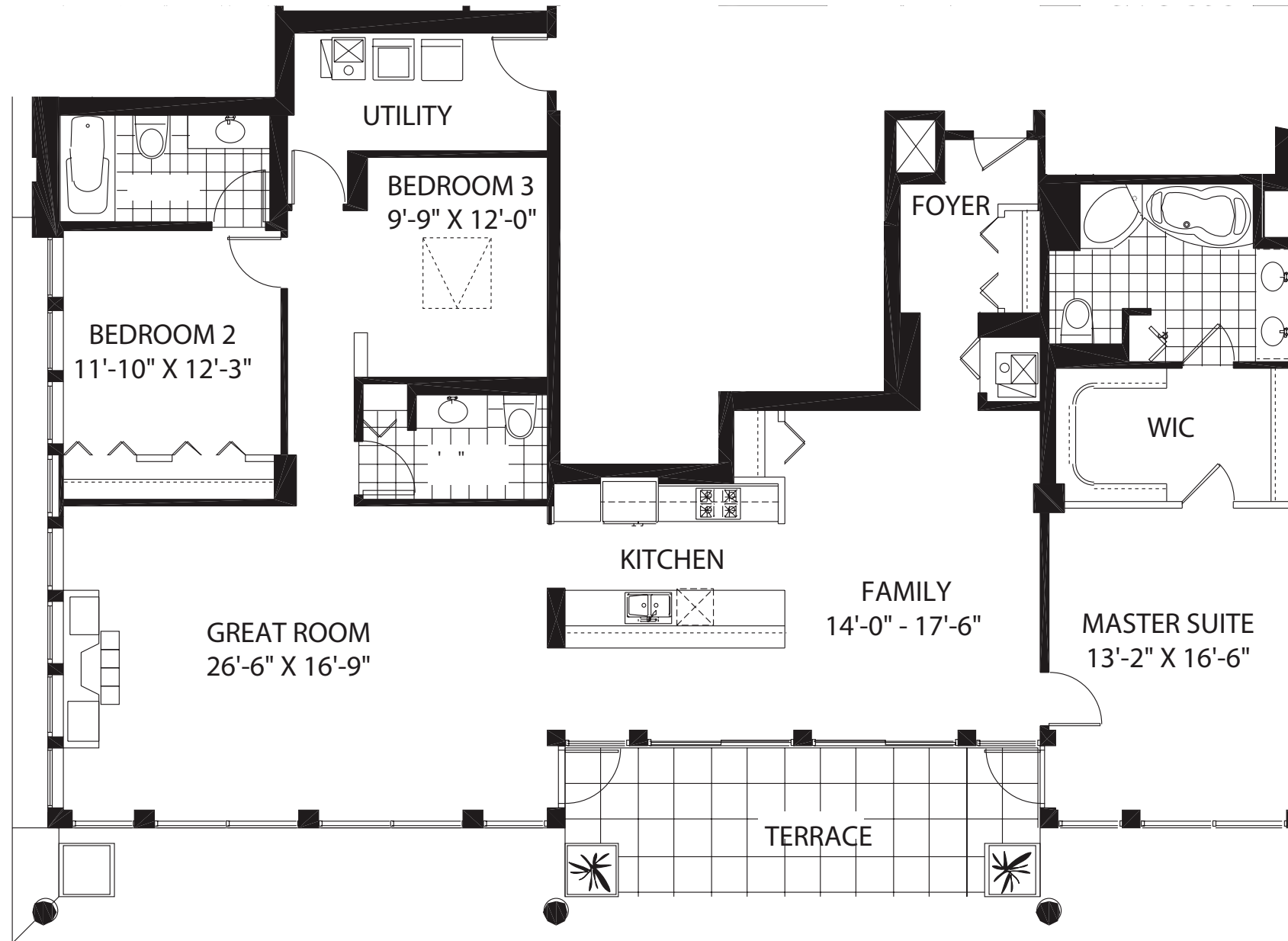


**740 FULTON** love where you live



**UNIT 1401** 2242 sq.ft.  
 plus 240 sq.ft. balcony  
 3 Bedrooms / 2 Full Baths / 1 Half Bath  
 Southeast view/corner



**UNIT 1401** 2242 sq.ft.

- Hardwood flooring (main living areas)
- Large private terrace
- Soaring 18' ceilings in main living areas
- Exposed ductwork with painted concrete ceilings
- Floor-to-ceiling windows with expansive views of city skyline
- Side-by-side washer and dryer
- Granite kitchen countertops
- Designer appliances available in stainless steel, black or white
- Marble countertops in master bath

\*740 Fulton, LLC strives to represent each home as accurately as possible. However, our policy of continued attention to design and construction requires that all specifications, equipment, finishes, prices and dimensions may be subject to change without notice.

**740**  
 FOURTEENTH floor



The Thrush Company's policy to provide the greatest degree of design and construction excellence to products and standard features require that features and pricing are subject to change without notice. Developer #1620804

**ThrushHomes.com**  
 BUILT FOR LIFE

**(312) 902.1200**